



Organised by



PARTNERSHIP BROCHURE

In aid of





CHARITY




COLLABORATION



COMPETITION



COMMUNITY

The background is a solid dark blue color. It is decorated with a repeating pattern of soccer balls. Some soccer balls are solid dark blue, while others are lighter blue with a pattern of small white dots. The soccer balls are arranged in a grid-like fashion, with some appearing larger and more prominent than others. In the top-left and bottom-right corners, there are clusters of small white dots arranged in a grid pattern, some of which fade out towards the edges.

**World Cup-on-Sea is an
annual charity football event
where 32 prominent businesses
compete in a 7-a-side tournament.**

Held at the iconic Roots Hall Stadium
every May, we have raised important
funds for several leading charities over
the last five years, including Great Ormond
Street Hospital and Southend YMCA.

ABOUT THE BRITISH HEART FOUNDATION

British Heart Foundation is the biggest independent funder of research into cardiovascular disease in the UK. We want to power the next breakthroughs in diagnosing, treating, and preventing the world's biggest killer. Our vision is a world where everyone has a healthier heart for longer.

From 3D-printed hearts to regenerative medicine, BHF funded research is behind many of the advances that keep hearts beating. We fund over £100 million of lifesaving research into heart and circulatory diseases each year so that we can support you when you need us most.

Proud to support



**British Heart
Foundation**

FUNDRAISING HISTORY

Over 5 years, we have raised more than £170,000 for various charities

2019



£22,000

2022



£28,000

2023



£39,400

2024



£48,000

2025



£35,000

WHAT DOES THE MEDIA SAY?

Click on a headline to find out...

London Southend
Airport revealed as
main sponsor for
World Cup-on-Sea

London Southend Airport

World Cup-on-Sea
2025 raises funds
for Southend YMCA

Evening Echo

World Cup-on-Sea
raises whopping
£27K for homeless
charity

Southend United FC

Ray Winstone to
support Southend's
World Cup-on-Sea

Evening Echo

CHARITY PARTNERS' **FEEDBACK**



Lisa Walton

Senior Fundraising Lead
Southend YMCA

2025 marks the 30th anniversary of Newlands, our supported housing for young people, so we're thrilled to have been chosen as the charity for WCOS. Every penny raised will go directly towards supporting the young people we work with.

At Southend YMCA, we believe that everyone deserves a fair chance to discover who they are and realise their full potential. Your support makes a real difference — thank you.



Jen McGrattan

Community Fundraising
Great Ormond St Hospital

I am absolutely delighted that AJ Chambers are supporting GOSH with World Cup-on-Sea. We are really looking forward to seeing the event come together.

Our team are so grateful for all of the efforts in raising money to help seriously ill children from across the UK who are treated at GOSH.



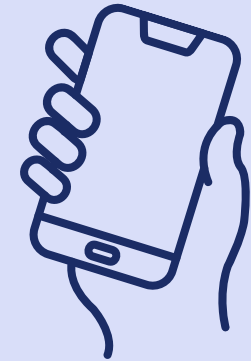
SOME OF THE BENEFITS FOR PARTNERING WITH US



Pitchside banner
branding at Roots
Hall on the day



Exposure to
professional individuals
and businesses



Co-branded tournament
with prominent social
media presence



Headline brand profile
on all marketing
material and programme



Your team entry into
the 7-a-side event is
included in the cost



Coverage in local
press, before
and after the event

MANY OF THE UK'S LEADING BUSINESSES TAKE PART

LAYTONS EYL
GLOBAL

C2C

LBH Insurance

RPGCC

HASLERS
intentionally different

scruttonbland

UHY

birketts

G|R
GILBERT
& ROSE

RickardLuckin

SIMKINS

COUNO®

London
Southend
Airport

jmw

SEGRAVE
& PARTNERS LLP

sg Simmons Gainsford Group

MOORE

affinity
group

Miller

CLAY
RATNAGE
& CO

Ipeco

REGIS

ECOVIS®

TC GROUP
CITROEN
WELLS

BARRETTS

Organised by



AJ
Chambers®

In aid of



British Heart
Foundation



VISIT OUR WEBSITE

